

Specialty
**HANDLING
EQUIPMENT**

W W W

LIVESTOCK SYSTEMS

AT W-W LIVESTOCK SYSTEMS WE KNOW THAT ONE SYSTEM DOES NOT FIT ALL NEEDS, THIS IS WHY WE HAVE DEVELOPED SPECIALTY LIVESTOCK HANDLING EQUIPMENT. FROM HANDLING HORNED CATTLE OR THAT CRANKY FRESH COW TO LOADING OR TRIMMING, W-W LIVESTOCK EQUIPMENT HAS YOU COVERED. RUGGED AND DEPENDABLE, EACH PIECE IS PROFESSIONALLY DESIGNED AND BUILT TO MEET YOUR NEEDS FOR YEARS TO COME:

- CALF TABLE
- PORTABLE LOAD CHUTE
- MATERNITY PEN
- LONGHORN CHUTE
- CROWD ALLEYS
- TRIM STOCK CHUTE



ACKERMAN A
SINCE 1969
DISTRIBUTING.COM
800-726-9091



Specialty HANDLING EQUIPMENT

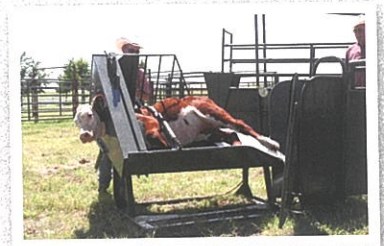


Calf Table

- WW Teco Calf Table is designed to work calves up to 600 pounds.
- Table features a headcatch and side squeeze bar for positive holding of animal.
- Designed with exceptional balance, resulting in easy tilting.
- A ratchet-driven dally rope on the rear gate draws the animal's legs back for easy access, resulting in time-saving, efficient working of any calves.

*WW Teco Calf Table- Left Hand Brand
2332-100-000*

*WW Teco Calf Table- Right Hand Brand
2332-200-000*



Portable Load Chute 2344-000-000

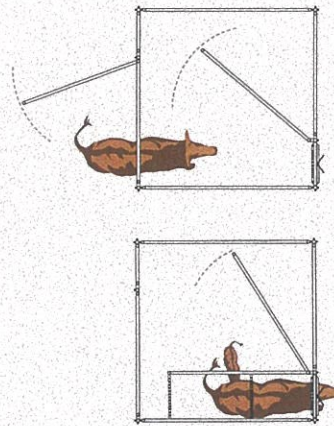
- WW Portable Load Chute loads ground level, 24", 36" and 48".
- Load chute length is 14', with the load ramp being 12', and less than 10' tall in transit.
- Panels on the side of load chute are sheeted 36" high.
- Includes non-skid Rumber floor and steel cleats every 18" to insure solid footing.
- Comes equipped with new 15" tires.
- All joints are saddle-cut for extra strength.
- Comes complete with a swing-out tongue.





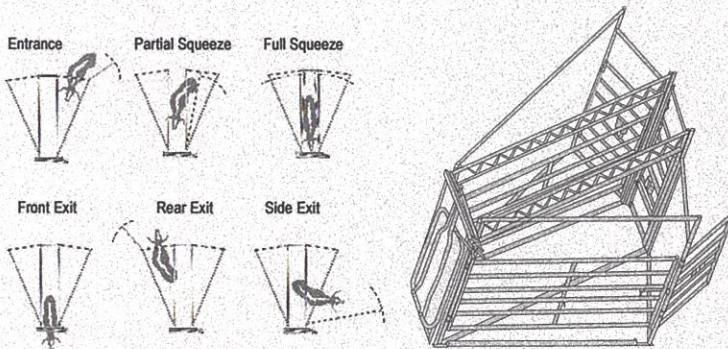
Maternity Pen 2331-040-000

- The WW Maternity Pen is a convenient 10' x 10' size.
- Can be easily setup and dismantled in any location.
- Features a headgate and 3 exterior gates for easy access and operator safety.
- A "Split" crowd gate permits newborn calves to nurse while the mother cow is restrained.



Longhorn Chute 2312-101-000

- The WW Longhorn Chute is 10' long and can be easily set up and dismantled.
- Scissor headgate opens to 29" x 66".
- Headgate features sheet metal covering to limit animal's vision.
- Features six exit options.
- Multiple width adjustments controlled by spring loaded plunger latches.



Specialty HANDLING EQUIPMENT



Crowd Alleys 2352-000-200

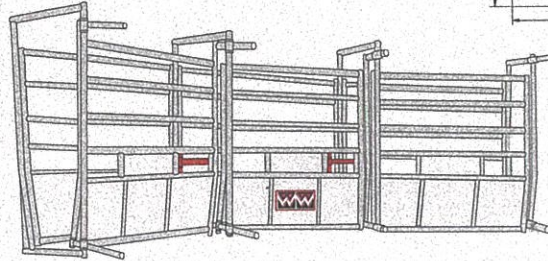
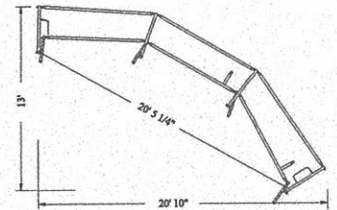
- WW Crowd Alleys are available in 2 or 3 straight and/or curved sections.
- Tapered sides adjust from 12" to 24" at ground level, and from 20" to 34" at top.
- Curved alleys encourage natural forward movement of cattle.
- All units have connecting pins on ends to receive doors and/or WW Panels.

3-Section Curved 2351-200-000

2-Section Curved 2352-200-000

3-Section Straight 2353-200-000

2-Section Straight 2354-200-000

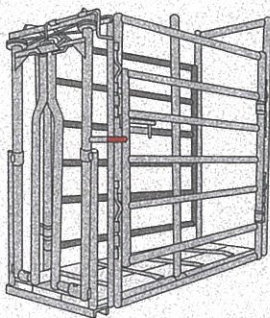


3 Section Curved Crowd Alley

Top Width Adjustment 18" to 33"
Bottom Width Adjustment 11" to 24"

Trim Stock Chute 2313-011-000

- Available with either the Beefmaster Self Catch Headgate or WW Scissor Headgate.
- Both sidegates are secured with self contained spring loaded plunger latches.
- Removable side restraint pipes on both sides.
- Easy to setup and dismantle with self contained drop pins (no bolts required)
- Floor equipped with metal cleats to prevent slipping



ACKERMAN A
SINCE 1969
DISTRIBUTING.COM
800-726-9091

