



# W-W Equine Systems



## Champion Vertical Rail Stall Front



Framework:	2.0" x 14 Gauge High Tensile Steel Tubing
Vertical Rails:	1/2" Steel Rod with 3" Spacing
Horizontal Channel:	2 x 2" x 11 Gauge Channel
Recommended Board Filler:	2 x 6" Lumber (Not provided by Manufacturer)

Vertical Rail Fronts are constructed from A-513 High Tensile Steel Tubing with 50,000 P.S.I yield strength. All joints on framework are saddle cut for extra strength. Top and bottom board channels are designed to receive 2" lumber. Spacing between each vertical rod is 3" x 32 1/8". Dividers interlock with 15" self contained, permanently attached drop pins designed to correspond and mesh with 2 1/2" x 1/8" steel clips on corresponding stall components. Doors roll smoothly and quietly on rust-free Celcon cannonball wheels that never need lubricating. See separate specification sheet for W-W Paint Application.



Serving The Stockman Since 1946



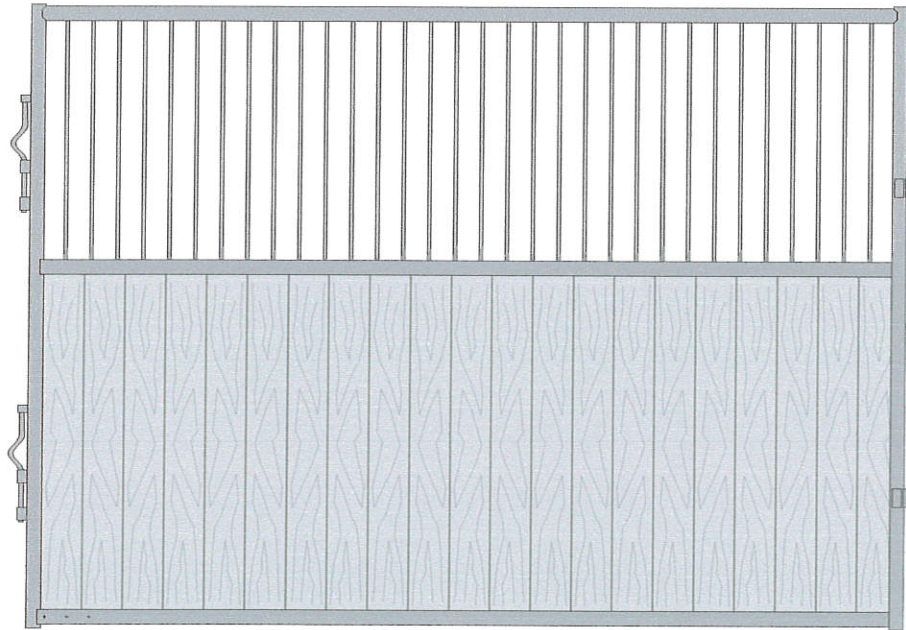
DesignCad/Vernon/Presentation/ChampFront



# W-W Equine Systems



## Champion Vertical Rail Stall Divider



Framework:	2.0" x 14 Gauge High Tensile Steel Tubing
Vertical Rails:	1/2" Steel Rod with 3" Spacing
Horizontal Channel:	2 x 2" x 11 Gauge Channel
Recommended Board Filler:	2 x 6" Lumber (Not provided by Manufacturer)

Vertical Rail Dividers are constructed from A-513 High Tensile Steel Tubing with 50,000 P.S.I yield strength. All joints on framework are saddle cut for extra strength. Top and bottom board channels are designed to receive 2" lumber. Spacing between each vertical rod is 3" x 32 1/8". Dividers interlock with 15" self contained, permanently attached drop pins designed to correspond and mesh with 2 1/2" x 1/8" steel clips on corresponding stall components. All units are 84" tall. See separate specification on W-W Paint application.



Serving The Stockman Since 1946



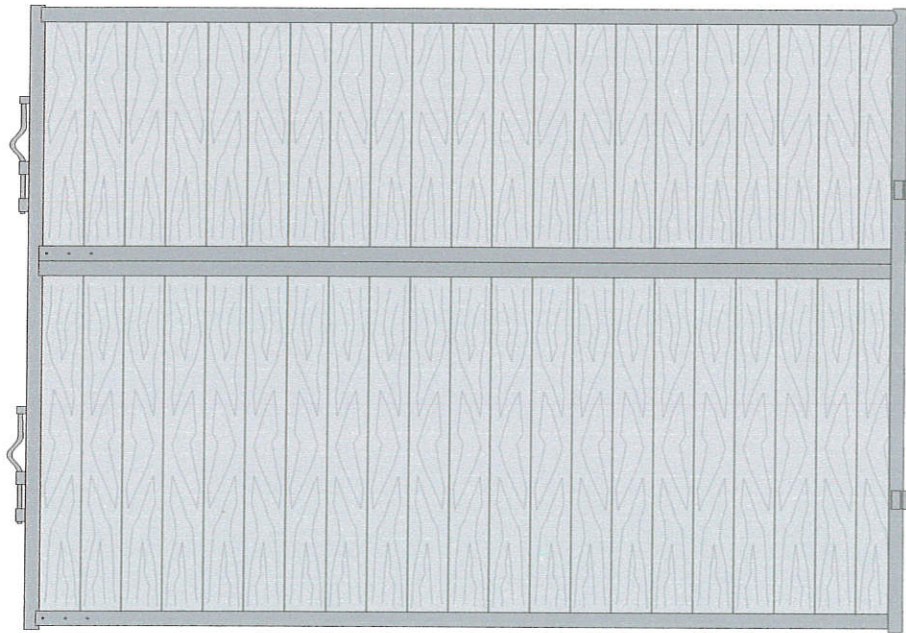
DesignCad/Vernon/Presentation/ChampDividerVR



# W-W Equine Systems



## Champion Solid Stall Divider



Framework:	2.0" x 14 Gauge High Tensile Steel Tubing
Horizontal Channel:	2 x 2" x 11 Gauge Channel
Recommended Board Filler:	2 x 6" Lumber (Not provided by Manufacturer)

Solid Wood Dividers are constructed from A-513 High Tensile Steel Tubing with 50,000 P.S.I yield strength. All joints on framework are saddle cut for extra strength. Top and bottom board channels in upper and lower sections of each divider are designed to receive 2" lumber. Dividers interlock with 15" self contained, permanently attached drop pins designed to correspond and mesh with 2 1/2" x 1/8" steel clips on corresponding stall components. All units are 84" tall. See separate specification sheet on W-W Paint application.



Serving The Stockman Since 1946



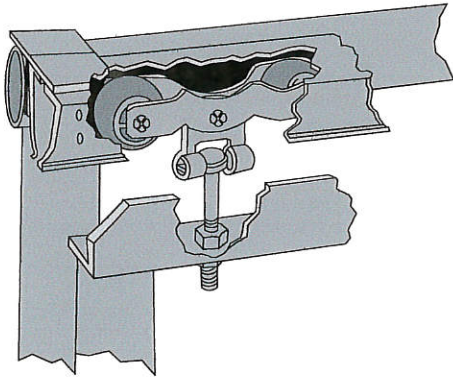
DesignCad/Vernon/Presentation/ChampDividerSolid



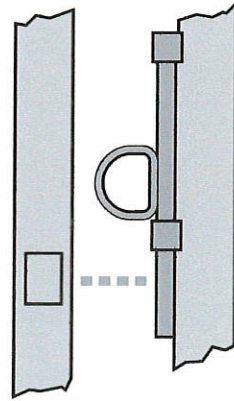
# W-W Equine Systems



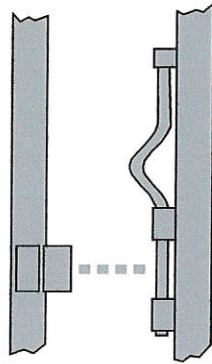
## Champion Equine Stall Features



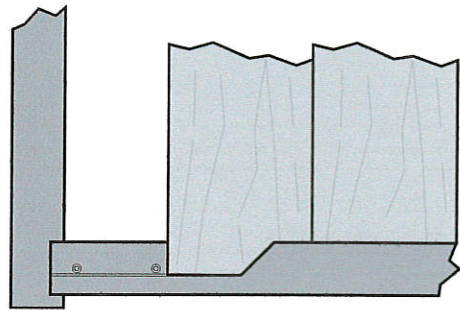
Doors roll smoothly and quietly on Celcon rust free trolley wheels that never need lubricated



Simple but efficient maintenance free latch secures rolling door in closed position.



Permanently attached, self contained, drop pins interlock easily with corresponding clips for rigid and secure, yet portable, structure.



2" boards slide vertically into 2" channel for easy installment and replacement if necessary.



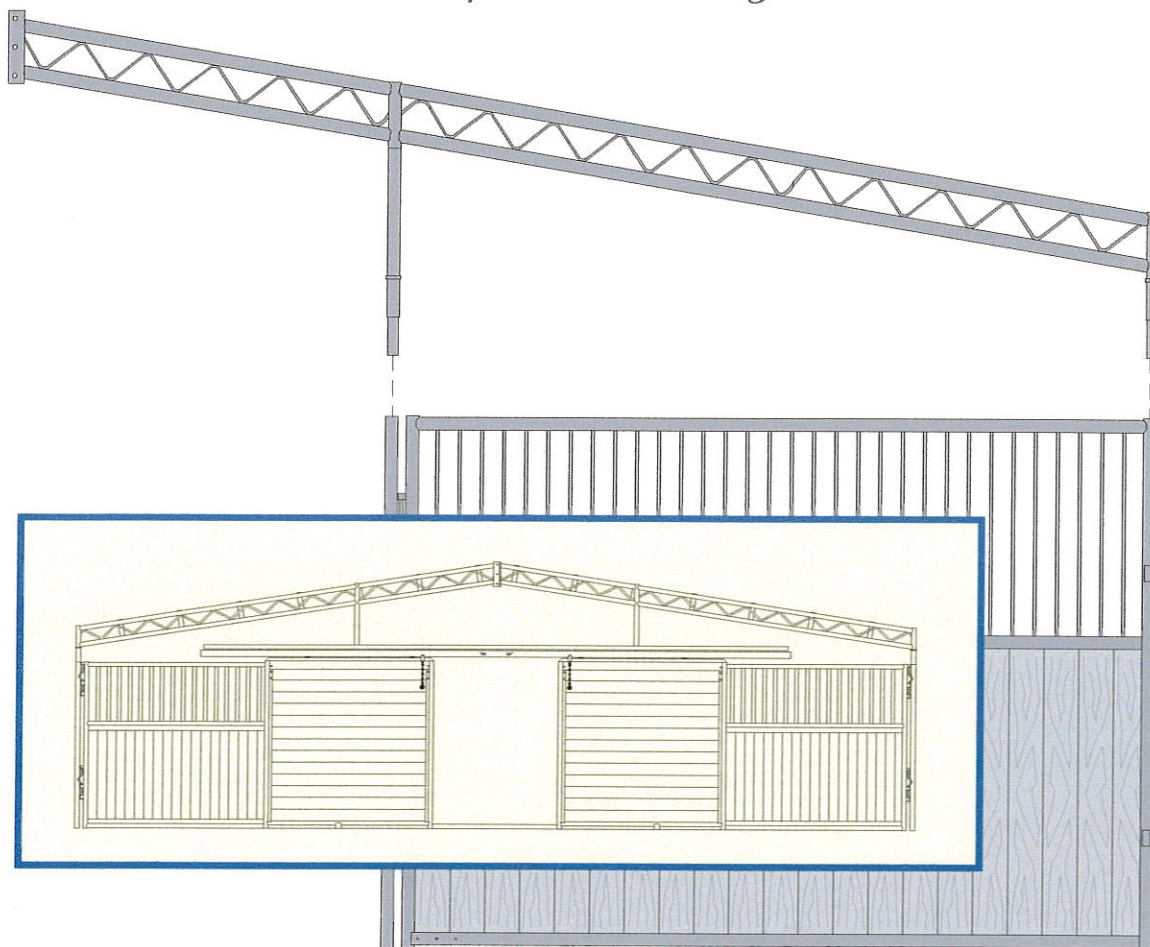
Serving The Stockman Since 1946



Design/Cad/Vernon/Presentation/ChampParts

# W-W Equine Systems

## Champion Building Truss



All Building Trusses are designed with a 2-12 pitch and are available for 30' and 36' wide barns. Truss rails are fabricated from 2" x 14 gauge High Tensile Steel Tubing with 50,000 P.S.I. Yield strength. Double truss rails are reinforced with 3/8" HHR Steel Webbing. Trusses come equipped with purlin clips fabricated from 2 x 2 x 3/16" angle, 9" long with prepunched holes. 3/8 x 2 1/2" straps, 11" long with prepunched holes are welded to end of each truss which allows connection to opposite truss. All trusses include stubs fabricated from 2" x 14 gauge steel tubing designed to slip into W-W Equine Stall Components. See separate specification sheet for paint application.



Serving The Stockman Since 1946



DesignCad/Vernon/Presentation/TrussSpecification