

*Flying A*

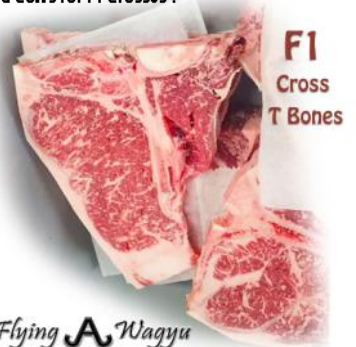
FOR SALE

100% FULL BLOOD BLACK WAGYU BULL



LDZ ITOMICHI AKA "WEATHERFORD"

- \* An Amazing Bull for your Wagyu Herd, or to breed to your Beef Breed Cows for F1 Crosses!
- \* Wagyu Cattle have Superior Beef Conversion!
- \* They have the Ability to Marble on Both Grain & Pasture Feeding!
- \* When Crossed with other Breeds, Wagyu increase Marbling, & improves the Quality of Grade!
- \* It has up to 30% more Monounsaturated fat than normal beef due to the high marbling of the meat, as well as incredibly high omega 3 and omega 6 content.
- \* **Wagyu beef has the lowest cholesterol levels of all meats, even lower than fish or chicken, and it contains oleic acid which is considered good for your heart!**



CALL DEAN № 970-539-0641

*Flying A Wagyu*

**1 of 2**

The Excellence

## AMERICAN WAGYU ASSOCIATION

Name: LDZ ITOMICHI 05H

**Birthdate:** 03/13/2020

**Tattoo/Brand:** LDZ 05H

**Coat Color:** Black

**DNA#:** 23906332

**Breeder:** STEVE CLONTS, PIMA, AZ, 1049

**Owner:** BLACK DOG RANCH & CATTLE CO, LLC, WEATHERFORD, TX, 1649

**Date of Ownership:** 02/02/2021

**Sex:** Male

**Location:**

**Horn:** Horned

**Reg#:** FB57259

**Category:** Black Wagyu

**Grade:** Fullblood

**Breed Comp %:** 100.00

**Genetic Status:** B3F, CHSF, CL16F, F11C, F13F

**Herd Classification:** Standard

Animal	Reg#	Category	Breed Comp %	Coat Color	Genetic Status
SHIGEFUKU J1822	FB6538	Black	100	Black	B3F, CHSF, CL16F, F11F
005 SHIGEFUKU 13M	FB6540	Black	100	Black	B3F, CHSF, CL16F, F11F
WESTHOLME ITOYASUDOI 13G	FB6539	Black	100	Black	
<b>LDZ SHIGZEKAORU 23E AI</b>	<b>FB30211</b>	<b>Black</b>	<b>100</b>	<b>Black</b>	<b>B3F, CHSF, CL16F, F11F, F13F</b>
CHR TAKAZAKURA 101L	FB5317	Black	100	Black	
LDZ TAKAZEKAORU 22B	FB26773	Black	100	Black	B3F, CHSF, CL16F, F11F, F13F
2+K ZEKAORU 64	FB26765	Black	100	Black	B3F, CHSF, CL16F, F11F, F13F
CHR TAK 122M	FB5803	Black	100	Black	
2+K TANCHOU	FB7194	Black	100	Black	
CHR MS TAK 109M	FB5334	Black	100	Black	
<b>2+K HOROSHA 27G</b>	<b>FB17169</b>	<b>Black</b>	<b>100</b>	<b>Black</b>	<b>B3F, CHSF, CL16F, F11C, F13F</b>
KIRU BIRU	FB6137	Black	100	Black	B3F, CHSF, CL16F, F11C
2+K KIBOU	FB9093	Black	100	Black	B3F, CHSF, CL16F, F11F
2+K ASAKO 08	FB7865	Black	100	Black	B3F, CHSF, CL16F, F11F, F13F

has been accepted (subject to the application duty signed by the Breeder and subject to the Constitution or By-Laws of the Association) for entry in the records of the American WAGYU Association

**№ FB57259 "WEATHERFORD"**

*Robert Williams, Ph.D.*  
Executive Director

PO Box 1115 • Post Falls, ID 83877

