

# JUG

*Waterers*

*“Clean Fresh Water, Always”*



**ACKERMAN**   
SINCE 1969  
  
**DISTRIBUTING.COM**  
**800-726-9091**



# JUG *Waterers*

\*Energy-Free models for warmer climates. (No Heater or Thermostat)

\*Energy-Efficient models for cold, cold winters. (With 65 Watt Heater and Thermostat)

\*Clean, Clean, Clean

\*Open Bowl Design

\*Unique Draw Tube Design

\*External Drain Plug

\*One, Two or Four Bowl Models

\*Inspection Cover For Easy Access

\*Feed Trap to Keep Water Clean

\*Durable Rotomolded Plastic

\*No Lids, Flaps, Balls or Disks

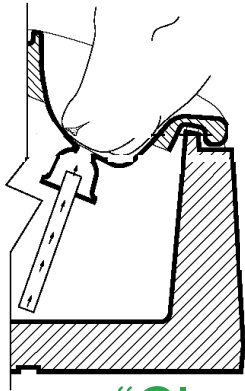
\*External Float Valve Adjustment

**"My cows love the JUG. I have watched cows bypass drinking out of the creek to drink out of the JUG. That tells you something, it's cooler, fresher water in the JUG than in our creek. Many thanks"**

**Fred Abels Holland, Iowa**



# How the JUG Works



## How animals drink from the JUG

It all starts with the “Draw Tube” which is a unique design for supplying the animal with water. It is much like a giant straw so the animal can use its normal method of drinking. The animal places its mouth in the open pool of water over the opening in the drinking bowl and sucks up the water just as it would drink from a natural water hole.

“Clean Fresh Water, *Always*”

*“Warmer water in the winter”*



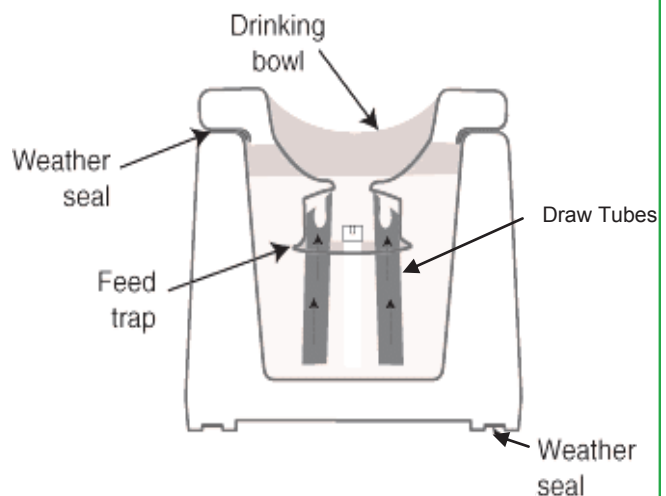
*“Cooler water in the summer”*

## Designed for clean water

JUG water is clean. No more smelly water from heavy bacterial growth. The Draw Tubes are attached to the drinking bowl with a **Feed Trap** which keeps feed debris from the animal's mouth out of the reservoir. As an animal drinks from the JUG a suction/swirling action is created in the Feed Trap area, thus most of the feed from the face of the animal is sucked up as the animal drinks. Also, anytime an animal drinks, the water is “turned over” as fresh, clean water enters the drinking bowl.

With JUG Livestock Waterers you will not have the usual slime problem to deal with. No algae will grow in the JUG since it is a light-tight waterer.

The bowl is sealed with Weather Seal.



## Animals Easily Adapt to the JUG

With the JUG, animals can see and smell clean, fresh water. They do not have to learn to lift flaps or push balls and floats out of the way to get a drink. An internal, pilot-operated float valve which is adjustable from the outside of the JUG, automatically keeps the water at the determined level.

### External Adjustment Screw

JUG Livestock Waterers have an external adjustment screw. Simply turn the screw with a coin or screwdriver. It is not necessary to remove the lid to raise the water level in the drinking bowl. When the animals know the JUG is their drinking station, return the water to its lower operating level to minimize the amount of water exposed to the weather.



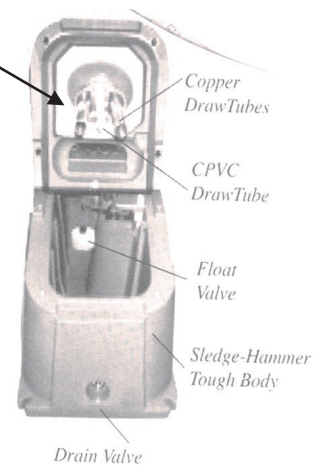
## Thermal energy, Not electric energy

The "Draw Tube" is really three tubes. Two copper and one CPVC. As the water gets cold in the drinking bowl, it becomes heavier and sinks down the CPVC tube forcing the warm tank water up the copper tubes into the drinking bowl. This keeps the water in the bowl from freezing by slowly circulating it and replenishing it with warmer water from the bottom of the reservoir.

In addition, the copper tubes are designed with a large surface area in the Feed Trap. Since copper is an excellent heat conductor, heat is transferred from the tank water to the trap area through the copper tube walls.

For Energy Free Models in marginal climates, you need enough animals drinking to keep water in the tank warm enough to provide heat energy (At least 15 head per drinking bowl.) Otherwise a small 65-watt heater may be added to make the JUG Energy Efficient. In either case it is primarily thermal energy, not electrical energy keeping the water fresh and at a constant temperature, summer and winter. The average electrical cost for a JUG Livestock Waterer is \$10.00 for the Entire Season.

The Jug is super insulated with urethane foam to conserve heat loss, and is very reliable in extreme cold and wind chills.



***It's like a Thermos JUG.***



## Features of the JUG



### Inspection Cover

The JUG has an inspection cover that can be easily removed for inspection and service to the float valve.

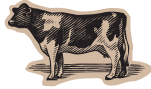
### External Drain Plug

The External Drain Plug allows easy draining of the water from the JUG tank. The JUG's design keeps the water free from feed or hay, but most water has iron bacteria which will leave a residue in the tank over time. It is therefore wise to drain the tank periodically.

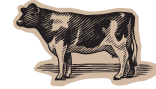


"I have three brands of waterers on the farm. ONLY the JUG is trouble free."

Sausser Farms  
Cascade, Iowa

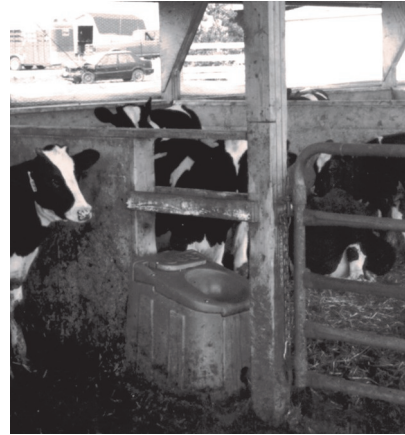


## Dairy Friendly



The JUG is perfect for dairy farms. It is equipped with an antisiphon float valve to prevent back siphoning into your water supply.

Energy Efficient (With Heat) JUG Waterers are equipped with a standard 65 Watt, 110 Volt Heater and Thermostat. Also available as special order are 220 Volt and 12 Volt Heaters.



### Energy-Free & Energy-Efficient Installations Using JUG Earth Tubes

*\*The JUG is super-insulated and has very little heat loss. It's like a Thermos Jug.*

#### Energy-Free

When animals drink, the water in the JUG is replenished by the warm ground water. In addition, when using an Insulated Earth Tube and Uninsulated Earth Tube, a heat well is formed which supplies additional heat from the ground. The Insulated Earth Tube extends below the frost line which prevents heat loss to the frozen ground in winter. The heat well works because heat from the warm ground flows through the Uninsulated Earth Tube into the heat well and then is used as additional energy to keep water in the JUG from freezing.

In summary: Heat from the incoming warm water and heat from the ground that flows into the heat well is used to keep the JUG frost-free. For Energy Free usage, in marginal climates, there must be the recommended minimum number of animals drinking (15 cattle per drinking bowl) to replenish the water in the JUG tank.

***\*\*Please note that for colder climates the Energy-Efficient (With Heat) Model is the model of choice.\*\****

#### Energy-Efficient

The Energy Efficient JUG, with its low wattage (65 Watt) heater and thermostat is designed to provide your animals with Frost Free water all winter long in cold weather areas. This small low wattage heater provides "insurance" against winter time freeze ups. In far northern regions that experience extreme cold for long periods of time, coupled with limited usage of the JUG, a supplemental low wattage heater, though rarely used, is available.



# New JUG Installations

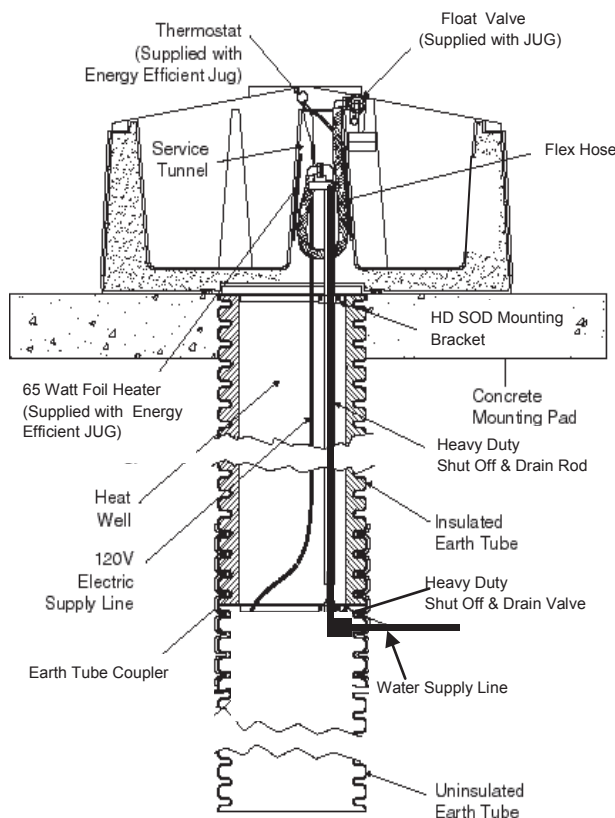
## OPTION #1

### Water Supplied by Heavy Duty Shut Off & Drain

This shows the use of the water supply Heavy Duty Shut Off & Drain. Advantage: If the JUG is installed in a location where animals will not be using it for long periods of time, the water can be shut-off and the water in the riser will be drained away. The JUG tank should also be drained and the incoming electric supply disconnected if it is an energy-efficient model.

For this installation you will need:

- \*Energy-Free or Energy-Efficient JUG
- \*Insulated Earth Tube
- \*Uninsulated Earth Tube
- \*Coupler for Earth Tubes
- \*Heavy Duty Shut Off & Drain
- \*Mounting Bracket for HD Shut Off & Drain
- \*Anchor Bolt Kit



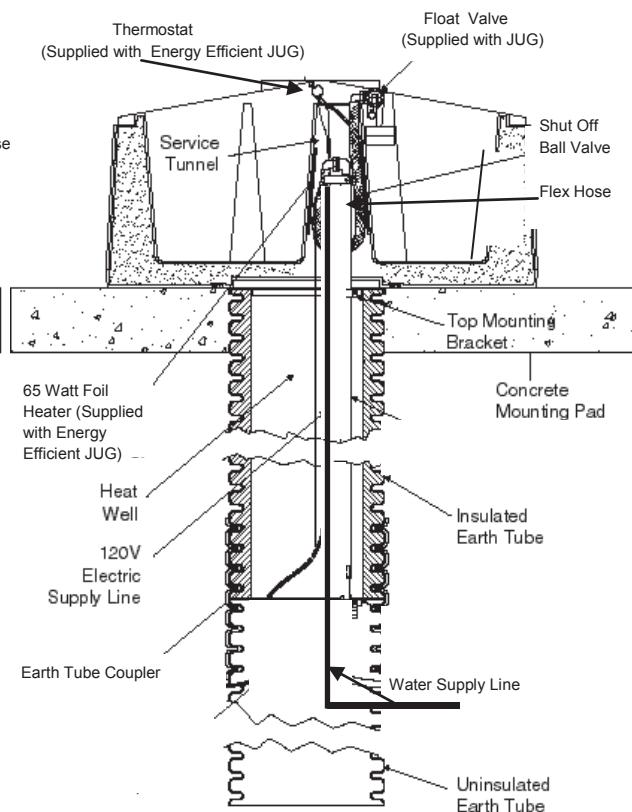
## OPTION #2

### Water Line / Ball Shut Off Combination

In this option the user furnishes the incoming water supply to the Shut Off Ball Valve.

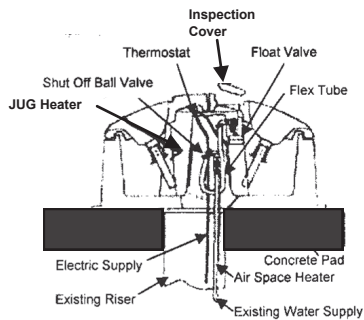
For this installation you will need:

- \*Energy-Free or Energy-Efficient JUG
- \*Insulated Earth Tube
- \*Uninsulated Earth Tube
- \*Coupler for Earth Tubes
- \*Top Mounting Bracket
- \*Shut Off Ball Valve
- \*Anchor Bolt Kit



## Replacing an Existing Waterer

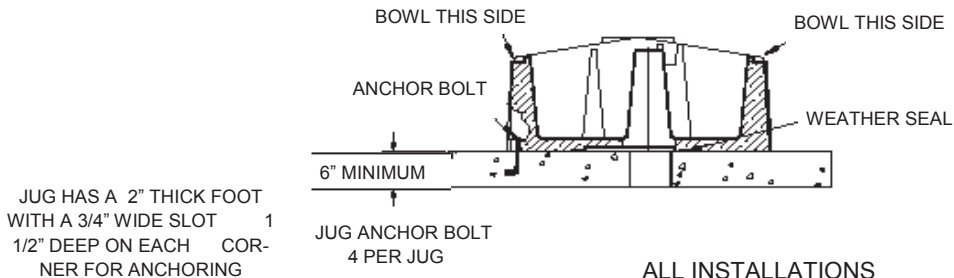
The Energy Efficient JUG is the choice when replacing a worn-out old fountain. This requires no excavation; just bolt the JUG down to your existing mounting pad. The JUG Waterer has a low wattage (65 watt) heating element and thermostat to provide "insurance" in cold climates. If your existing incoming water line is in an open uninsulated tile and you have been experiencing waterline freeze ups in the past, it is a good idea to install a low wattage (42 Watt) 5 Foot Air Space Heater in the tile when you install your new JUG. For warm climate areas the Energy Free JUG is the model of choice.



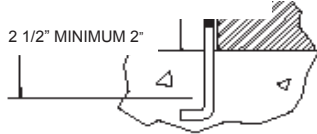
5 Foot Air Space Heater



## JUG Mounting Pad Information



JUG HAS A 2" THICK FOOT WITH A 3/4" WIDE SLOT 1 1/2" DEEP ON EACH CORNER FOR ANCHORING

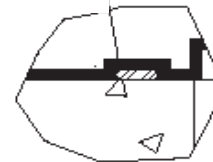


ANCHOR BOLT DETAIL

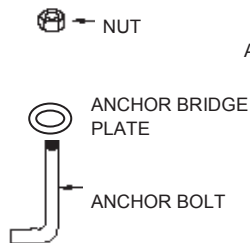
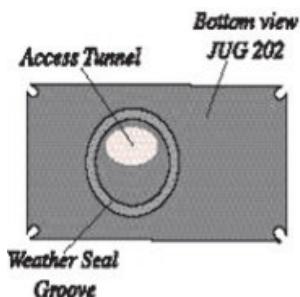
ALL INSTALLATIONS

JOINT BETWEEN BASE AND JUG MUST BE SEALED BY PUTTING THE WEATHER SEAL SUPPLIED WITH THE JUG IN THE GROOVE

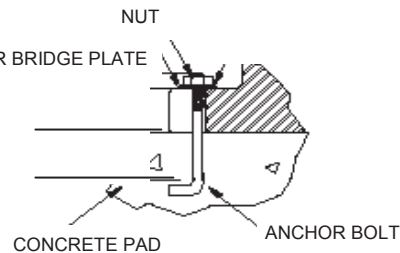
WEATHER SEAL



WEATHER SEAL DETAIL



ANCHOR BOLT DETAIL

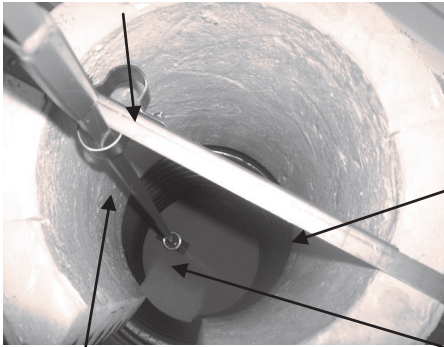




# Heavy Duty Shut Off & Drain

Over View of HD Shut Off/Drain  
and Mounting Bracket

C Strap For Incoming Water Supply Line



HD SOD Mounting  
Bracket

HD Shut Off Drain Rod

C strap for Shut Off/Drain Rod

Out and Up Water Line  
Supplied by customer

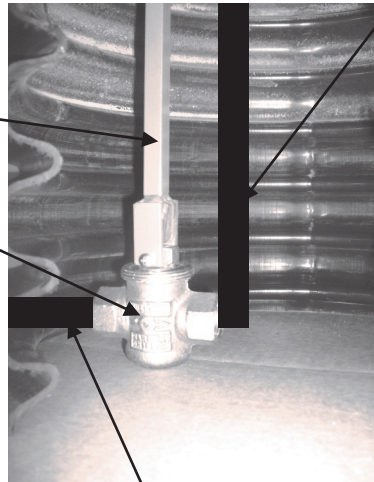
Shut Off Drain Rod

Shut Off Drain

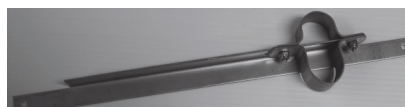


HD Shut Off Drain shown with  
Flipper Handle Down and with  
Flipper Handle Up  
(for turning valve off and on)

Incoming Water Line Supplied by Customer



Shut Off Drain



HD SOD Mounting Bracket

**Heavy Duty Shut Off & Drain** The Heavy Duty Shut Off & Drain is available in 3,4, 6 and 7 Foot lengths. 1 Foot extensions are also available. A convenient "Flipper" Handle at the top of the Shut Off Rod turns the Shut Off & Drain Valve on or off.







# JUG Earth Tubes



## Insulated Earth Tube

15 Inch OD, corrugated plastic tubing insulated inside with Urethane foam to a 10 1/4" ID. Used to insulate the heat well below the frost line, preventing heat loss of energy into the frozen ground, as well as eliminating the possibility of frozen waterlines.

## Durable

Won't rust, resists rot, and holds up to chemically active soil conditions. Unaffected by ground movement due to freezing and thawing.

## Strong

Corrugated design provides rigidity without bulk when back filled with earth.

## Insulated Earth Tube Lengths

2 ft. long #10021

3 ft. long #10031

4 ft. long #10041



## #10510 Top Mounting Bracket

To keep the waterline "centered" up through the Tube into the JUG.



## Uninsulated Earth Tube

15 inch OD, corrugated plastic tubing. Used to extend the Insulated Earth Tube into warm ground below the frost line and form the heat well.

## Uninsulated Earth Tube Lengths

2 ft. long #10020

3 ft. long #10030

4 ft. long #10040



## Coupler for Earth Tubes

#10000

Used for joining the Earth Tubes. It is a split plastic coupler that fits into the corrugation of the Earth Tubes.



Mark & Debbie Anderson  
F & H Ranch  
Lebanon, TN



"From the "Show Girls" to the "kids" every goat enjoys the cool clean water these systems produce. We were told the key to keeping the herd healthy was good food and clean water. We researched many of the watering systems on the market and purchased two to compare. The JUG not only met every promise/expectation but is extremely easy to maintain and by far had the best water quality, day after day. The other system is in our barn and will be replaced with another JUG Model 202 soon. We can't imagine any goat rancher not benefiting by installing a JUG system(s)"



### \*\*\*JUG Accessories\*\*\*



#10575  
Heater Thermostat Kit



#24405  
5 Foot Air Space Heater



#10500  
Ball Shut Off Valve



#10525  
Anchor Bolt Kit

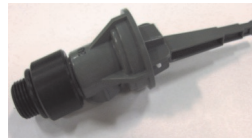
### \*\*\*JUG Parts\*\*\*



#10710  
Complete Float Valve



#10705  
Front Half Float Valve



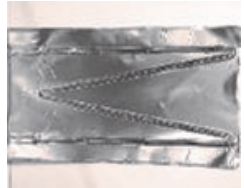
#10709  
Basic Float Valve



#10720  
Diaphragm



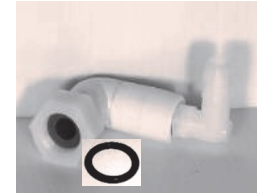
#10703  
Arm Pin Diaphragm



#10665  
65 Watt Heater



#10640  
JUG Thermostat



#10735      #10736  
Fitting Assembly      Seal for  
Fitting Assembly



#10880  
Drain Plug



#10756  
External Adjusting Shaft



#10824  
SS Lid to Lid Bolt



#10826 Nut for SS Bolts



#10850  
Bottom Weatherseal Kit



#10860  
Top Weatherseal Kit

#10822  
SS Lid to Base Bolt  
#10820  
SS Inspection Cover Bolt

#10828  
Washer for SS Bolts





"We have been using JUG Waterers for 10 years with 100 head of Horses, and now 1000, plus Whitetails. The JUG is very cost efficient, and easy to maintain. The deer transition to the JUG easily."

Chad De Bauch  
Ranch Manager  
Apple Creek Whitetails  
Gillett, Wisconsin



"This product is one of the few that hasn't given me problems throughout my years of raising cattle. It was a wise decision when we purchased the JUGs over 20 years ago."

LaRene Dvorsky  
Iowa City, Iowa



"Maintenance free, no balls to fool with, worry free."  
"Excellent customer service."

Ivan "Chip" Davis  
Whetstone Farm, LLC  
Dillwyn, Virginia

Go JUG Green!





# 303 JUG Horse Stall Waterer



## Animals Adapt Easily:

No flaps to lift or balls to push, animals drink naturally, even young ones.

## Clean, Clean water:

Draw Tube Feed Trap doesn't allow debris to fall into the tank reservoir, which means less maintenance, and clean water.

## Energy Efficient:

If you have a cold barn, count on the JUG's super insulation to conserve heat loss. A low 30 watt heater gives you the added assurance of frost free water.

## Super Insulation:

The strong polyethylene body has thick urethane foam which means cool water in summers and frost free winters.

## External Adjustment Screw:

Provides easy adjustment of the water level in the bowl when introducing new animals to their water source. After they learn there is a constant clean water supply, lower the water level.

## 303 Mounting:

The 303 JUG is mounted in the corner or on the wall of the stall or paddock.

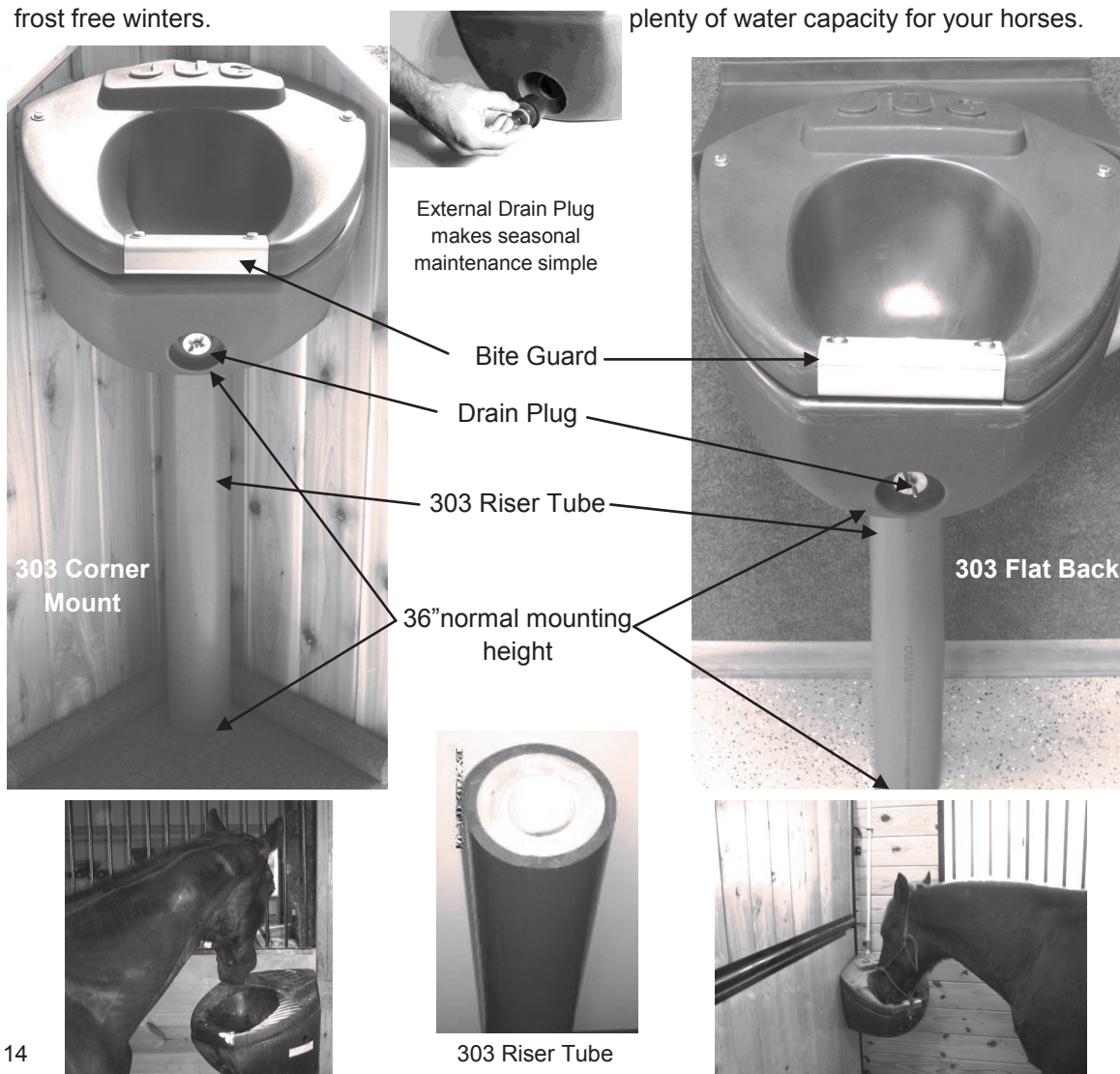
## External Drain Plug:

For easy draining of water from the JUG.

## Bite Guard:

An 18 gauge stainless steel guard, prevents damage from cribbing.

**Capacity:** The 303 JUG with it's 2 gallon reservoir and high volume float valve offers plenty of water capacity for your horses.





"We water beef cattle and horses with JUG fountains. We have never had any freeze ups with these fountains. We feel that the JUG would be great for any kind of livestock."

Steve & Karen Stulen  
New London Minnesota



*"Clean Fresh Water, Always"*



## \*\*\*Specifications\*\*\*

	101	202	404
Dimensions	L25" x W20" x H24"	L41" x W20" x H22 1/2"	L39" x W37" x H22"
Energy Free	Model 101 EF	Model 202 EF	Model 404 EF
Energy Efficient (With 65 Watt Heater & Thermostat)	Model 101 WH	Model 202 WH	Model 404 WH
Tank Capacity	7 gallons	14 gallons	45 gallons
Animal Capacity			
Dairy	25 head	50 head	125 head
Beef	50 head	100 head	250 head
Sheep	75 head	150 head	300 head
Weight	53 lbs.	76 lbs.	105 lbs.

## JUG Waterers Warranty

JUG Waterers are warranted from the date of purchase, to the original purchaser, to be free from defects in materials, and workmanship under normal use, and service for:

**All Parts, and Components-----2 Years**

**Bases-----12 Years Prorated**

This warranty does not apply if the waterer was not used according to the recommendations stated in the owner/operator manual that is provided with each waterer. All freight charges are the responsibility of the customer. If upon inspection by manufacturer, the part is determined to be defective, it will be repaired, or replaced. This warranty supersedes any other warranty, expressed, or implied.

The limit of liability to the manufacturer shall be the purchase price only, and does not apply to any losses, injuries, or damages resulting from the use of this product.

The buyer and all users are deemed to have accepted the terms of this warranty, which may not be varied by any verbal or written agreement.



**ACKERMAN**   
 SINCE 1969  
**DISTRIBUTING.COM**  
**800-726-9091**